

F22A active  
F28A active  
F30CY active  
F38A active  
F40A active

lbs/ft

**F22A active**

**F28A active**

**F30CY active**

**F38A active**

**F40A active**



**FASSI**

CRANESWITHOUT COMPROMISE

US

### F22A active

LIFTING CAPACITY:

up to 14828 lbs.ft

MAX OUTREACH:

up to 18'6"

OVERALL DIMENSIONS:

l 1'8" , w 5'11" , h 4'11"

HYDRAULIC EQUIPMENT:

Hydrocontrol monobloc distributor bank

immediate stop device and pressure gauge

CHARACTERISTICS:

active version (.0): without linkage

rotation 370° with rack and pinion

### F28A active

LIFTING CAPACITY:

up to 18082 lbs.ft

MAX OUTREACH:

up to 22'7" m

OVERALL DIMENSIONS:

l 1'8" , w 5'11" , h 4'11"

HYDRAULIC EQUIPMENT:

Hydrocontrol monobloc distributor bank

immediate stop device and pressure gauge

CHARACTERISTICS:

active version (.0): without linkage

rotation 370° with rack and pinion

### F30CY active

LIFTING CAPACITY:

up to 18806 lbs.ft

MAX OUTREACH:

up to 21'1"

OVERALL DIMENSIONS:

l 1'8" , w 5'4" , h 4'11"

HYDRAULIC EQUIPMENT:

Hydrocontrol monobloc distributor bank

immediate stop device and pressure gauge

CHARACTERISTICS:

active version (.0): without linkage

rotation 370° with rack and pinion

FR

### F22A active

CAPACITÉ DE LEVAGE:

jusqu'à 14828 lbs.ft

BRAS HYDRAULIQUE:

jusqu'à 18'6"

ENCOMBREMENT GRUE:

l 1'8" , w 5'11" , h 4'11"

ÉQUIPEMENT HYDRAULIQUE:

distributeur hydraulique monobloc Hydrocontrol

dispositif d'arrêt immédiat et manomètre

CARACTÉRISTIQUES:

version active (.0): sans bielle

rotation 370° avec crémaillère et pignon

### F28A active

CAPACITÉ DE LEVAGE:

jusqu'à 18082 lbs.ft

BRAS HYDRAULIQUE:

jusqu'à 22'7"

ENCOMBREMENT GRUE:

l 1'8" , w 5'11" , h 4'11"

ÉQUIPEMENT HYDRAULIQUE:

distributeur hydraulique monobloc Hydrocontrol

dispositif d'arrêt immédiat et manomètre

CARACTÉRISTIQUES:

version active (.0): sans bielle

rotation 370° avec crémaillère et pignon

### F30CY active

CAPACITÉ DE LEVAGE:

jusqu'à 18806 lbs.ft

BRAS HYDRAULIQUE:

jusqu'à 21'1"

ENCOMBREMENT GRUE:

l 1'8" , w 5'4" , h 4'11"

ÉQUIPEMENT HYDRAULIQUE:

distributeur hydraulique monobloc Hydrocontrol

dispositif d'arrêt immédiat et manomètre

CARACTÉRISTIQUES:

version active (.0): sans bielle

rotation 370° avec crémaillère et pignon

ES

### F22A active

POTENCIA DE ELEVACIÓN:

hasta 14828 lbs.ft

MÁXIMO ALCANCE HIDRÁULICO:

hasta 18'6"

EMBARAZADO GRÚA:

l 1'8" , w 5'11" , h 4'11"

DOTACIÓN HIDRÁULICA:

distribuidor hidráulico de un solo bloque Hydrocontrol

dispositivo de parada inmediato y manómetro

CARACTERÍSTICAS:

versión active (.0): sin sistema de bielas

rotación 370° con cremallera y piñón

### F28A active

POTENCIA DE ELEVACIÓN:

hasta 18082 lbs.ft

MÁXIMO ALCANCE HIDRÁULICO:

hasta 22'7"

EMBARAZADO GRÚA:

l 1'8" , w 5'11" , h 4'11"

DOTACIÓN HIDRÁULICA:

distribuidor hidráulico de un solo bloque Hydrocontrol

dispositivo de parada inmediato y manómetro

CARACTERÍSTICAS:

versión active (.0): sin sistema de bielas

rotación 370° con cremallera y piñón

### F30CY active

POTENCIA DE ELEVACIÓN:

hasta 18806 lbs.ft

MÁXIMO ALCANCE HIDRÁULICO:

hasta 21'1"

EMBARAZADO GRÚA:

l 1'8" , w 5'4" , h 4'11"

DOTACIÓN HIDRÁULICA:

distribuidor hidráulico de un solo bloque Hydrocontrol

dispositivo de parada inmediato y manómetro

CARACTERÍSTICAS:

versión active (.0): sin sistema de bielas

rotación 370° con cremallera y piñón

The images are sole purpose of presentation of the product - Les images sont à seule fin de la présentation du produit - Las imágenes son solo propósito de la presentación del producto



US

### F38A active

LIFTING CAPACITY:

up to 24592 lbs.ft

MAX OUTREACH:

up to 24'9"

OVERALL DIMENSIONS:

l 1'9" , w 6'3" , h 5'2"

HYDRAULIC EQUIPMENT:

Hydrocontrol monobloc distributor bank

immediate stop device and pressure gauge

CHARACTERISTICS:

active version (.0): without linkage

rotation 370° with rack and pinion

### F40A active

LIFTING CAPACITY:

up to 28209 lbs.ft

MAX OUTREACH:

up to 30'4"

OVERALL DIMENSIONS:

l 1'9" , w 6'10" , h 5'9"

HYDRAULIC EQUIPMENT:

Hydrocontrol monobloc distributor bank

Immediate stop device and pressure gauge

CHARACTERISTICS:

active version (.0): without linkage

rotation 370° with rack and pinion

FR

### F38A active

CAPACITÉ DE LEVAGE:

jusqu'à 24592 lbs.ft

BRAS HYDRAULIQUE:

jusqu'à 24'9"

ENCOMBREMENT GRUE:

l 1'9" , w 6'3" , h 5'2"

ÉQUIPEMENT HYDRAULIQUE:

distributeur hydraulique monobloc Hydrocontrol

dispositif d'arrêt immédiat et manomètre

CARACTÉRISTIQUES:

version active (.0): sans bielle

rotation 370° avec crémaillère et pignon

### F40A active

CAPACITÉ DE LEVAGE:

jusqu'à 28209 lbs.ft

BRAS HYDRAULIQUE:

jusqu'à 30'4"

ENCOMBREMENT GRUE:

l 1'9" , w 6'10" , h 5'9"

ÉQUIPEMENT HYDRAULIQUE:

distributeur hydraulique monobloc Hydrocontrol

dispositif d'arrêt immédiat et manomètre

CARACTÉRISTIQUES:

version active (.0): sans bielle

rotation 370° avec crémaillère et pignon

ES

### F38A active

POTENCIA DE ELEVACIÓN:

hasta 24592 lbs.ft

MÁXIMO ALCANCE HIDRÁULICO:

hasta 24'9"

EMBARAZADO GRÚA:

l 1'9" , w 6'3" , h 5'2"

DOTACIÓN HIDRÁULICA:

distribuidor hidráulico de un solo bloque Hydrocontrol

dispositivo de parada inmediato y manómetro

CARACTERÍSTICAS:

versión active (.0): sin sistema de bielas

rotación 370° con cremallera y piñón

### F40A active

POTENCIA DE ELEVACIÓN:

hasta 28209 lbs.ft

MÁXIMO ALCANCE HIDRÁULICO:

hasta 30'4"

EMBARAZADO GRÚA:

l 1'9" , w 6'10" , h 5'9"

DOTACIÓN HIDRÁULICA:

distribuidor hidráulico de un solo bloque Hydrocontrol

dispositivo de parada inmediato y manómetro

CARACTERÍSTICAS:

versión active (.0): sin sistema de bielas

rotación 370° con cremallera y piñón

The images are sole purpose of presentation of the product - Les images sont à seule fin de la présentation du produit - Las imágenes son solo propósito de la presentación del producto



**F22A active - F28A active - F30CY active - F38A active - F40A active**  
Gallery





F22A active - F28A active - F30CY active - F38A active - F40A active



- US** CITY  
Crane designed for the installation on narrow vehicles to circulate in town that have narrow streets as well as narrow house access paths.
- FR** CITY  
Grue conçue pour le montage sur camions étroits, pour circuler dans les villes où les rues ou l'accès aux habitations sont réduits.
- ES** CITY  
Grúa diseñada con características compatibles para su montaje sobre camiones estrechos para poder circular en ciudades con calles de dimensiones reducidas.

## US

### Features

**BASE** - Cast iron base and lower column section for ideal stress distribution and greater resistance. The absence of welds in the design achieves long term product life and less failure to fatigue thru normal crane usage.

**BOOM WEAR-PADS** - The cranes feature std. boom wear pads specifically designed and implemented thru the "forced" assembly process providing greater durability and service, allowing for fewer scheduled greasing requirements.

**TANK** - Std. non corrosive plastic tank insures long term crane operation by limiting contaminants in the hyd. system.

**OUTRIGGER** - Manual extendable tilttable outrigger also in "Extra wide" and "Super Extra wide"(F38A, F40A) application.

### Optional

**WORK LIGHT** - Powerful and versatile light that can be directed as required: helps you to work safely, even in conditions of poor natural light. Can be activated by means of a pushbuttons located close to the distributor bank.

**SUPPLEMENTARY FUNCTIONS** - Supplementary functions for the use of hydraulic accessories, protected by an exclusive Fassi system consisting of metal trays paired with highly resistant nylon guide-chains. High quality hoses resistant to the external wear

**WINCH** - Cable-operated lifting device equipped with an exclusive, patented mechanical, torque and end stop limiter system which avoids the risks resulting from direct and indirect overload applied to the winch itself. Anti-twist cable and cable guide pulley to make easy the aligned winding of the cable on the winch drum.

## FR

### Caractéristiques

**EMBASE** - Embase et partie inférieure de la colonne en fusion de fonte pour avoir une répartition optimum des sollicitations et une résistance plus importante. L'absence de soudures donne à la grue une longévité exceptionnelle.

**PATINS DE GUIDAGE** - Patins de guidage sur les bras d'extension, à montage "forcé" afin de réduire les jeux verticaux et latéraux prolongeant ainsi la durée de vie de l'ensemble. Patins en matériel spécial avec un degré de glissement élevé et demande réduite d'engraissage.

**RÉSERVOIR** - Réservoir en matière plastique très résistant aux chocs et à l'action corrosive de tout élément extérieur

**STABILISATEURS** - Stabilisateurs pivotants à extension manuel, disponible aussi en version "Extra large" et "Super Extra large" (F38A, F40A).

### En option

**PHARE DE TRAVAIL** - Phare directionnel variable, puissant et adaptable, qui permet de travailler en toute sécurité même avec une mauvaise visibilité. Peut être activé avec le bouton situé tout près au distributeur hydraulique.

**TUYAUTERIES SUPPLÉMENTAIRES** - Tuyauteries supplémentaires pour l'utilisation d'accessoires hydrauliques, protégées par un système exclusif Fassi se composant de supports en métal couplés à des chaînes de guidage en nylon à haute résistance. Tuyauteries flexibles de grande qualité résistantes à l'ozone.

**TREUIL** - Dispositif de levage par câble équipé du système exclusif breveté de limiteur de couple et de fin de course mécanique, évitant les risques de toute surcharge directe ou indirecte infligée au treuil. Câble anti-giratoire et poulie de guidage pour enroulement aligné et facilité du câble sur le tambour.

## ES

### Características

**BASE** - Base y parte inferior de la columna de fundición de hierro colado para una distribución ideal de los esfuerzos de carga y resistencia superior. La ausencia de soldaduras confiere a la grúa características excepcionales de resistencia a la fatiga.

**PATINES DE GUÍA** - Patines de guía de los brazos extensibles, con montaje "forzado" para reducir las holguras verticales y laterales, garantizando una vida útil más larga. Patines especiales con elevado grado de deslizamiento y baja necesidad de engrase.

**DEPÓSITO** - Depósito de material plástico especialmente resistente a los golpes y a la acción corrosiva de cualquier elemento externo.

**ESTABILIZADORES** - Estabilizadores rotantes a extensión manual tambien en version "Extra extensible" y "Super Extra extensible" (F38A, F40A).

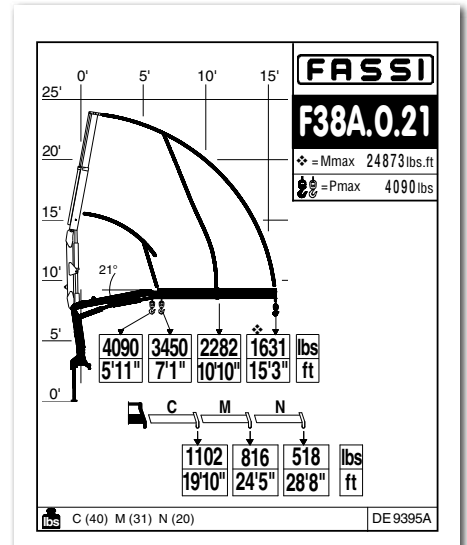
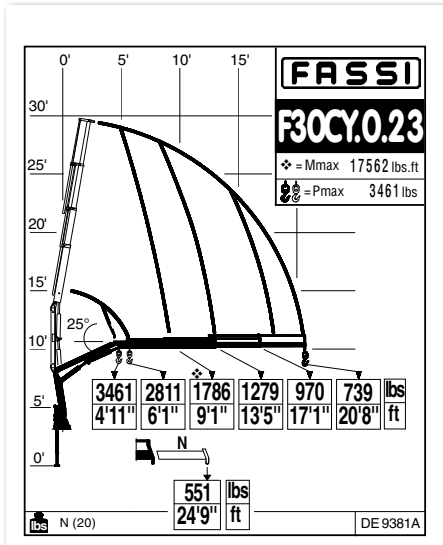
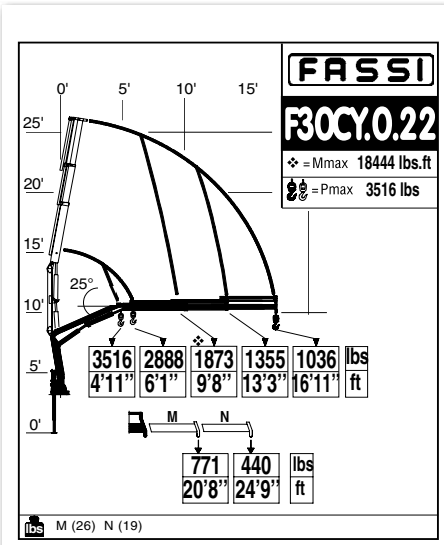
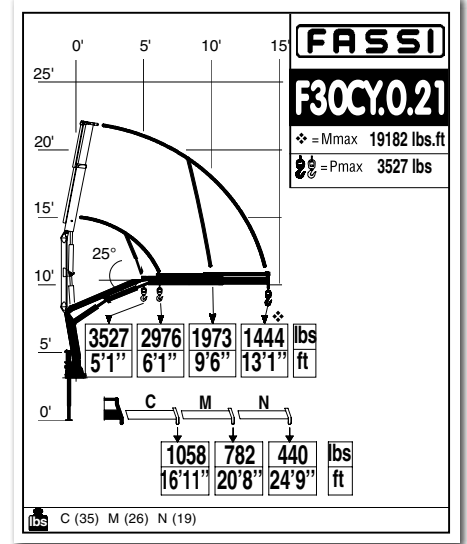
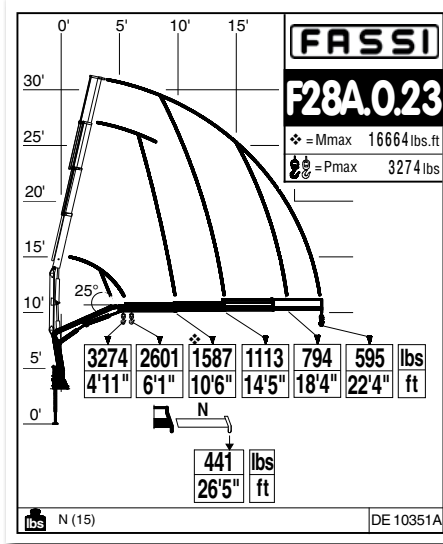
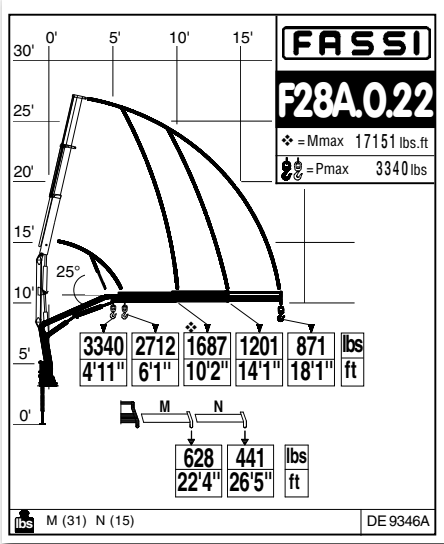
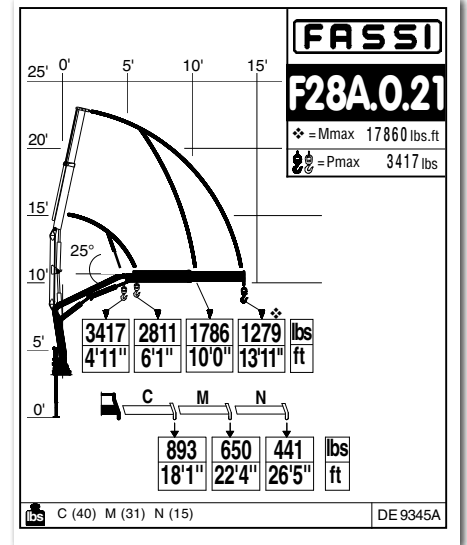
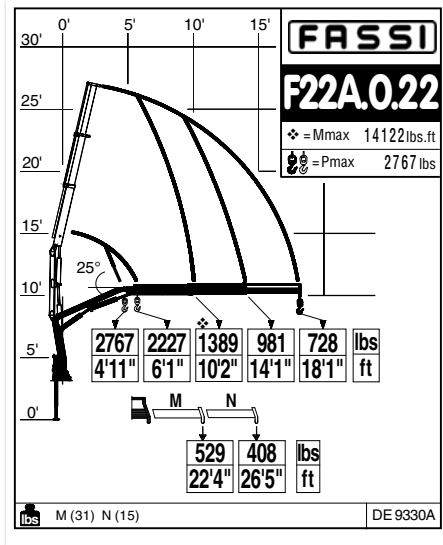
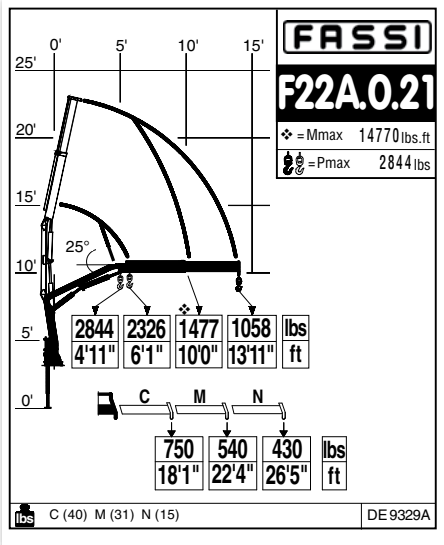
### Opcional

**FARO PARA TRABAJO** - Poderoso y versátil faro de dirección variable, ayuda a trabajar en seguridad, también en condiciones de iluminación escasa del ambiente. Se puede activar mediante el pulsador situado junto al distribuidor.

**TUBERÍAS ADICIONALES** - Tuberías adicionales para el uso de accesorios hidráulicos, protegidas por un sistema Fassi exclusivo constituido por canaletas metálicas combinadas con cadenas de guía de nylon de alta resistencia. Tubos flexibles de alta calidad y resistentes a la acción del ozono.

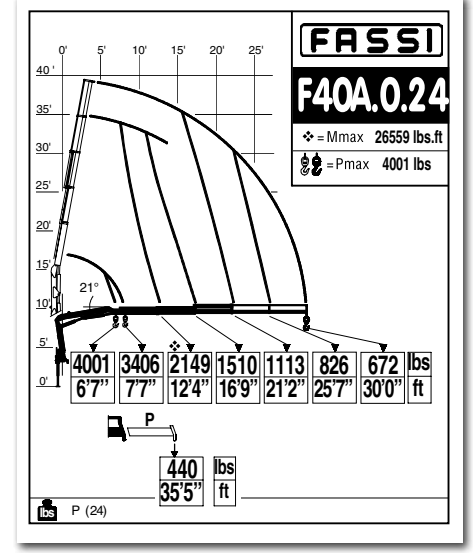
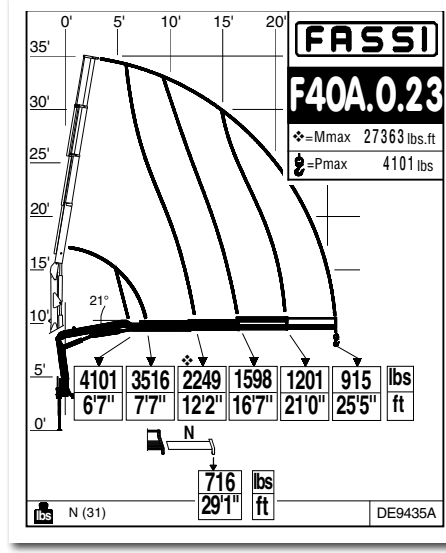
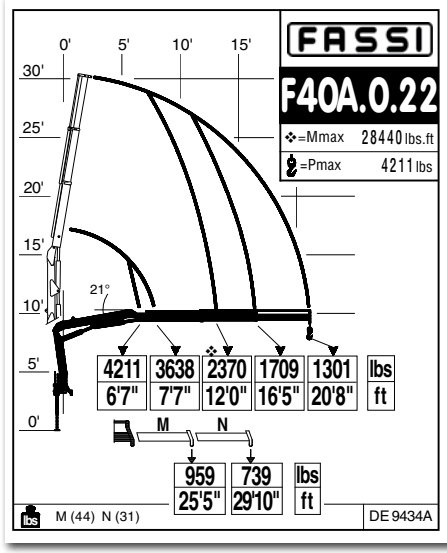
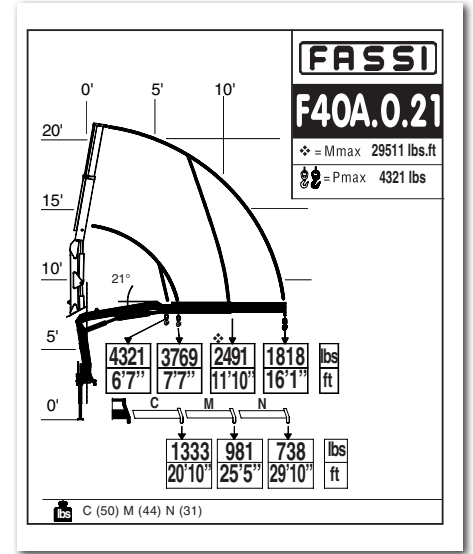
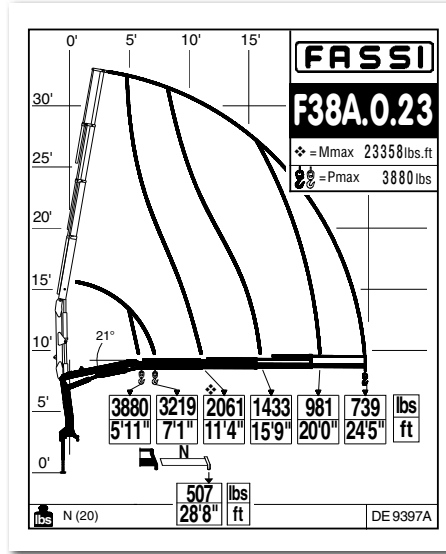
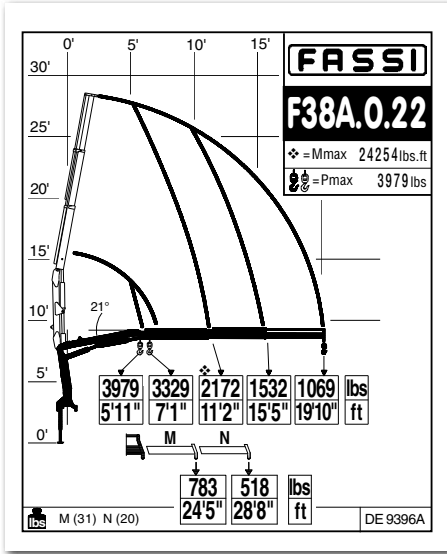
**CABRESTANTE** - Dispositivo de elevación por cable equipado con un exclusivo sistema patentado de doble limitador final de carrera mecánico, que evita los riesgos que derivan de las sobrecargas directas e indirectas aplicadas sobre el propio cabrestante. Cable anti giro y polea guiada para rebobinado alineado al tambor.





US Dynamic load diagrams calculated, tested and certified to lift the loads at the declared reaches  
FR Diagrammes de charge dynamiques calculés, testés et certifiés pour soulever les charges aux extensions déclarées  
ES Diagramas de carga dinámicos, calculados, probados y certificados para a elevación de la cargas a los alcances declarados








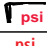













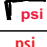






**CERTIFIED  
DYNAMIC  
PERFORMANCE**






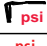






- US Dynamic load diagrams calculated, tested and certified to lift the loads at the declared reaches
- FR Diagrammes de charge dynamiques calculés, testés et certifiés pour soulever les charges aux extensions déclarées
- ES Diagramas de carga dinámicos, calculados, probados y certificados para a elevación de la cargas a los alcances declarados













## F22A active - F28A active - F30CY active - F38A active - F40A active













### Technical data







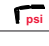








lbs/ft												
	lbs.ft	ft	ft	°	lbs.ft	psi	gpm	gal	lbs	ft	ft	ft
F22A.0.21	14755	14'5"	3'11"	370	2951	2980	3	9	793	5'11"	1'8"	4'11"
F22A.0.22	14032	18'6"	7'10"	370	2951	2980	3	9	881	5'11"	1'8"	4'11"

lbs/ft												
	lbs.ft	ft	ft	°	lbs.ft	psi	gpm	gal	lbs	ft	ft	ft
F28A.0.21	17721	14'5"	3'11"	370	2951	3480	3	9	859	5'11"	1'8"	4'11"
F28A.0.22	16925	18'6"	7'10"	370	2951	3480	3	9	947	5'11"	1'8"	4'11"
F28A.0.23	16925	22'7"	11'9"	370	2951	3480	3	9	1025	5'11"	1'9"	4'11"

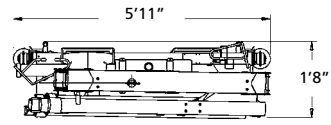
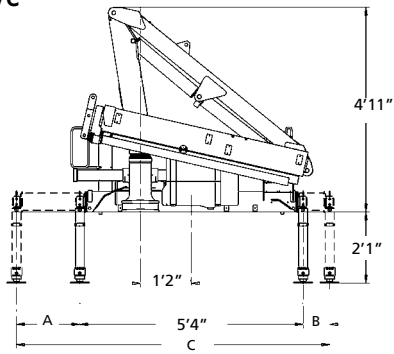
lbs/ft												
	lbs.ft	ft	ft	°	lbs.ft	psi	gpm	gal	lbs	ft	ft	ft
F30CY.0.21	19167	13'7"	3'7"	370	2951	3630	3	9	859	5'4"	1'8"	4'11"
F30CY.0.22	18444	17'7"	7'2"	370	2951	3630	3	9	936	5'4"	1'8"	4'11"
F30CY.0.23	17721	21'1"	10'9"	370	2951	3630	3	9	992	5'4"	1'8"	4'11"

lbs/ft												
	lbs.ft	ft	ft	°	lbs.ft	psi	gpm	gal	lbs	ft	ft	ft
F38A.0.21	25098	15'7"	4'5"	370	3910	3410	4	9	1080	6'3"	1'9"	5'2"
F38A.0.22	24303	20'2"	8'10"	370	3910	3410	4	9	1179	6'3"	1'10"	5'2"
F38A.0.23	23579	24'9"	13'1"	370	3910	3410	4	9	1267	6'3"	1'10"	5'2"

lbs/ft												
	lbs.ft	ft	ft	°	lbs.ft	psi	gpm	gal	lbs	ft	ft	ft
F40A.0.21	29511	16'6"	4'5"	370	5164	3270	4	9	1355	6'10"	1'9"	5'9"
F40A.0.22	27992	21'1"	8'10"	370	5164	3270	4	9	1466	6'10"	1'9"	5'9"
F40A.0.23	27268	25'9"	13'3"	370	5164	3270	4	9	1576	6'10"	1'10"	5'9"
F40A.0.24	26545	30'4"	17'6"	370	5164	3270	4	9	1653	6'10"	1'11"	5'9"

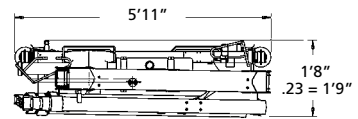
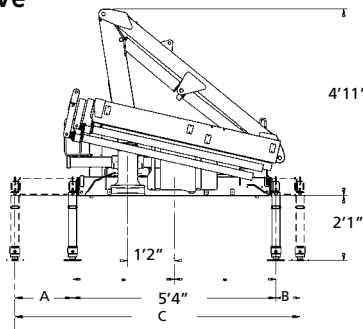
												
	Lifting capacity	Standard reach	Hydraulic extension	Rotation	Rotation torque	Working pressure	Pump capacity	Oil tank capacity	Crane weight	Crane width	Installation width	Crane height
	Capacité de levage	Bras standard	Extension hydraulique	Rotation	Couple de rotation	Pression d'utilisation	Débit de la pompe	Capacité du réservoir d'huile	Poids de la grue	Largeur de la grue	Largeur de montage	Hauteur de la grue
	Capacidad de elevación	Brazo standard	Extensión hidráulica	Ángulo de rotación	Potencia de rotación	Presión de trabajo	Capacidad de la bomba	Capacidad depósito aceite	Peso de la grúa	Anchura de la grúa	Anchura de montaje	Altura de la grúa

### F22A active



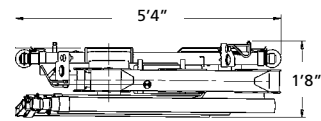
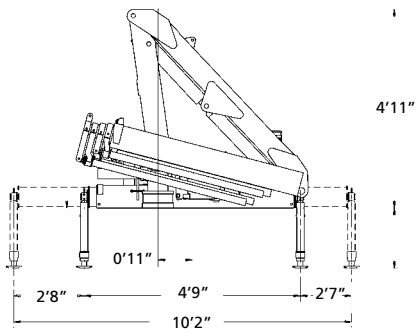
	STD	XL
A	1'6"	2'11"
B	0'7"	1'9"
C	7'6"	10'2"

### F28A active

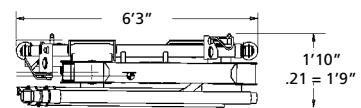
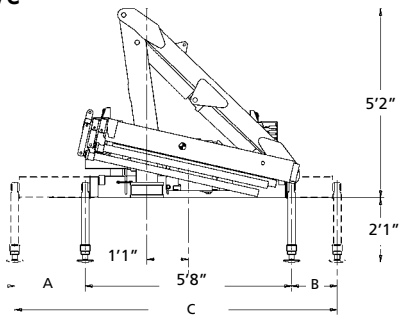


	STD	XL
A	1'6"	2'11"
B	0'7"	1'9"
C	7'6"	10'2"

### F30CY active

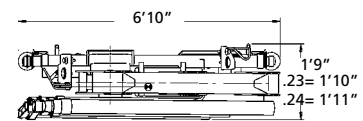
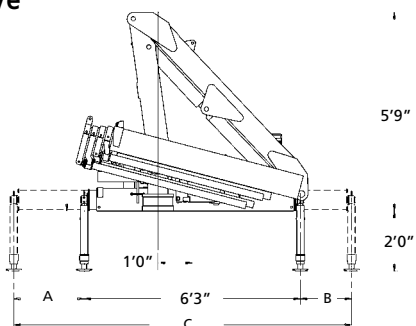


### F38A active



	STD	XL	XXL
A	1'11"	2'10"	4'2"
B	1'3"	2'0"	2'10"
C	8'11"	10'6"	12'

### F40A active



	STD	XL	XXL
A	2'0"	3'2"	5'6"
B	1'5"	2'6"	3'10"
C	9'10"	12'0"	15'8"



## US

### ELECTRONIC DOCUMENTATION

All documentation related to the "Techno chips" and the crane is available in electronic format. Require all information you may need directly to your Fassi dealer or download them from the internet site: [www.fassi.com](http://www.fassi.com).

## FR

### DOCUMENTATION ELECTRONIQUE

Toutes les informations relatives aux "Techno chips" et aux grues sont disponibles sous format électronique. Elles peuvent être demandées aux concessionnaires Fassi ou téléchargées sur le site [www.fassi.com](http://www.fassi.com).

## ES

### DOCUMENTACION ELECTRÓNICA

Toda la información relativa a los "Techno chips" y a las grúas está disponible en formato electrónico. Se puede solicitar directamente a los concesionarios Fassi, o bien descargarse on line desde la web [www.fassi.com](http://www.fassi.com).



**FASSI**

[www.fassi.com](http://www.fassi.com)

FASSI GRU S.p.A.  
Via Roma, 110  
24021 Albino (Bergamo) ITALY  
Tel- +39 035 776400  
Fax +39 035 755020  
<http://www.fassi.com>  
E-mail: [fassi@fassi.com](mailto:fassi@fassi.com)

COMPANY  
WITH QUALITY MANAGEMENT  
SYSTEM CERTIFIED BY DNV  
= ISO 9001:2008 =